



NICHE COMPUTER CONSULTANTS PVT. LTD.

Company Profile

COMPLETE IT SOLUTION PROVIDERS

QUICK OVERVIEW

About us: Learn more about the company and its journey

Our offerings: The plethora of services available

Why choose us: Our strengths that make us the perfect choice for you

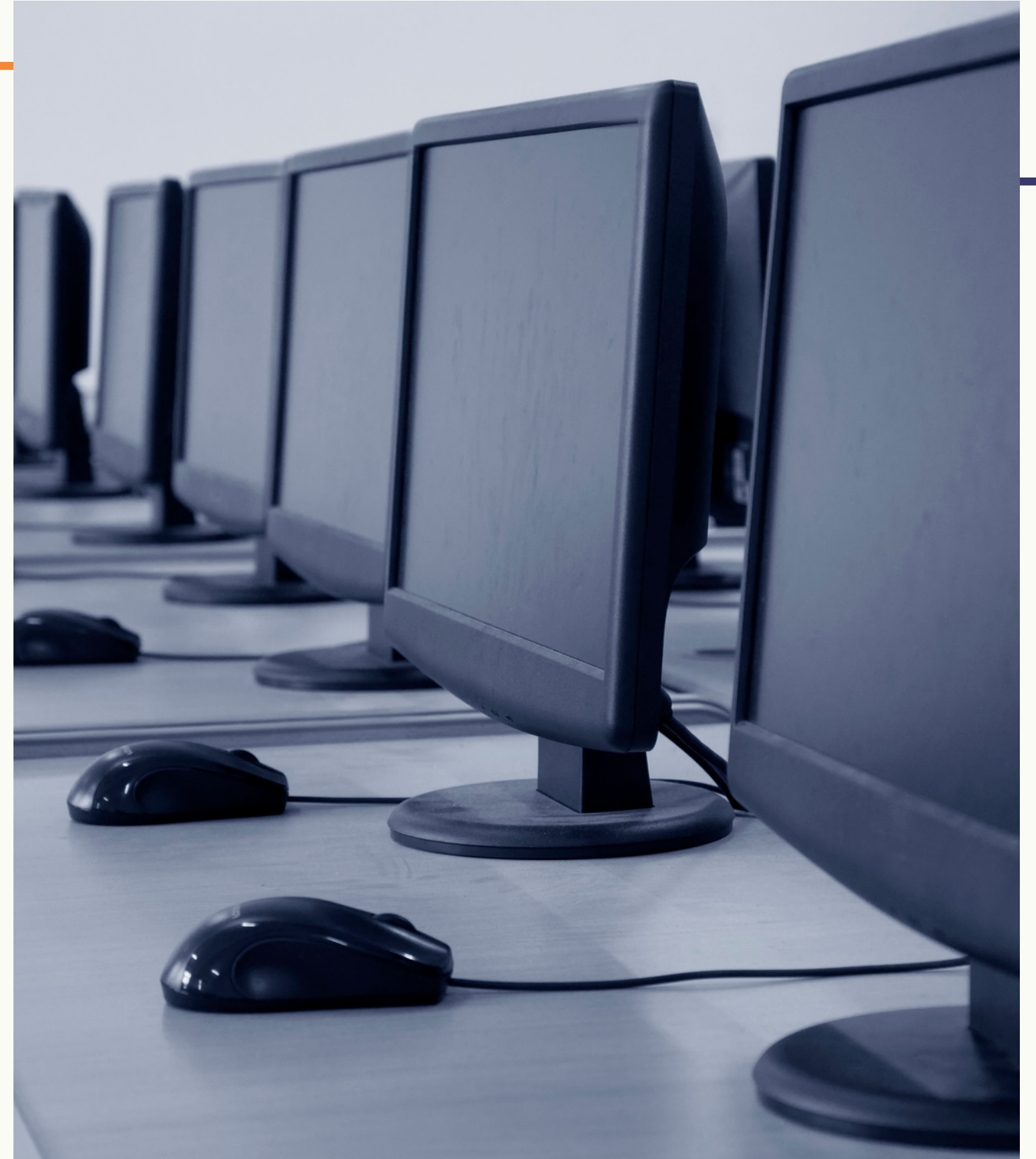
Software Portfolio: A hand-picked collection of our software that may be of interest to you

TABLE OF CONTENTS

ABOUT US

AN INTRODUCTION

Since 1991, Niche Computer Consultants Pvt. Ltd. has been a leading IT solutions provider, with innovative services to help clients build & support reliable & advanced integrated IT solutions. Having partnered with the top companies of India like Tata, HP, Samsung and many more, our focus is on fulfilling all your IT requirements in the most effective manner possible.



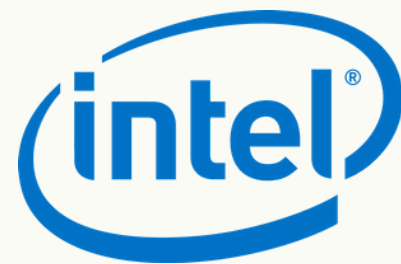
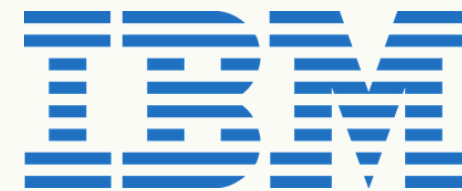
OUR ASSOCIATES & TRADE PARTNERS



D-Link



SAMSUNG



And many more



WHAT WE OFFER

OUR KEY SOLUTIONS

HARDWARE SOLUTIONS

- Sales and services of desktops, laptops, printers, routers, smartphones etc.
- Annual Maintenance Contracts
- Network Management
- Telecom Solutions like lease-line, PRI line, VC etc

SOFTWARE SOLUTIONS

- Customised Softwares
- Web Applications
- Mobile Apps
- Websites

WHY CHOOSE US

ADVANTAGES OF PICKING OUR SERVICES

Thirty years of
excellence

A qualified and
tech-savvy team

Proficiency
over modern
technology

1100+ satisfied
customers

Wide software
portfolio

Healthy
partnership with
reputed brands

Flexible
service

One-stop-shop
for all IT &
Telecom needs

Client-oriented
philosophy

MSME
Registered &
CRISIL Rated

HARDWARE PORTFOLIO

WHAT DOES IT INCLUDE

Choosing the appropriate hardware is something you can't go wrong with. In order to ensure that your software runs effectively and productively, you need to invest in hardware that is durable, reliable and substantial.



A GLIMPSE INTO OUR HARDWARE PORTFOLIO



**Laptop Repair
/ Desktop Repair**



**Network
Configuration**



**Telecom Products
& Services**



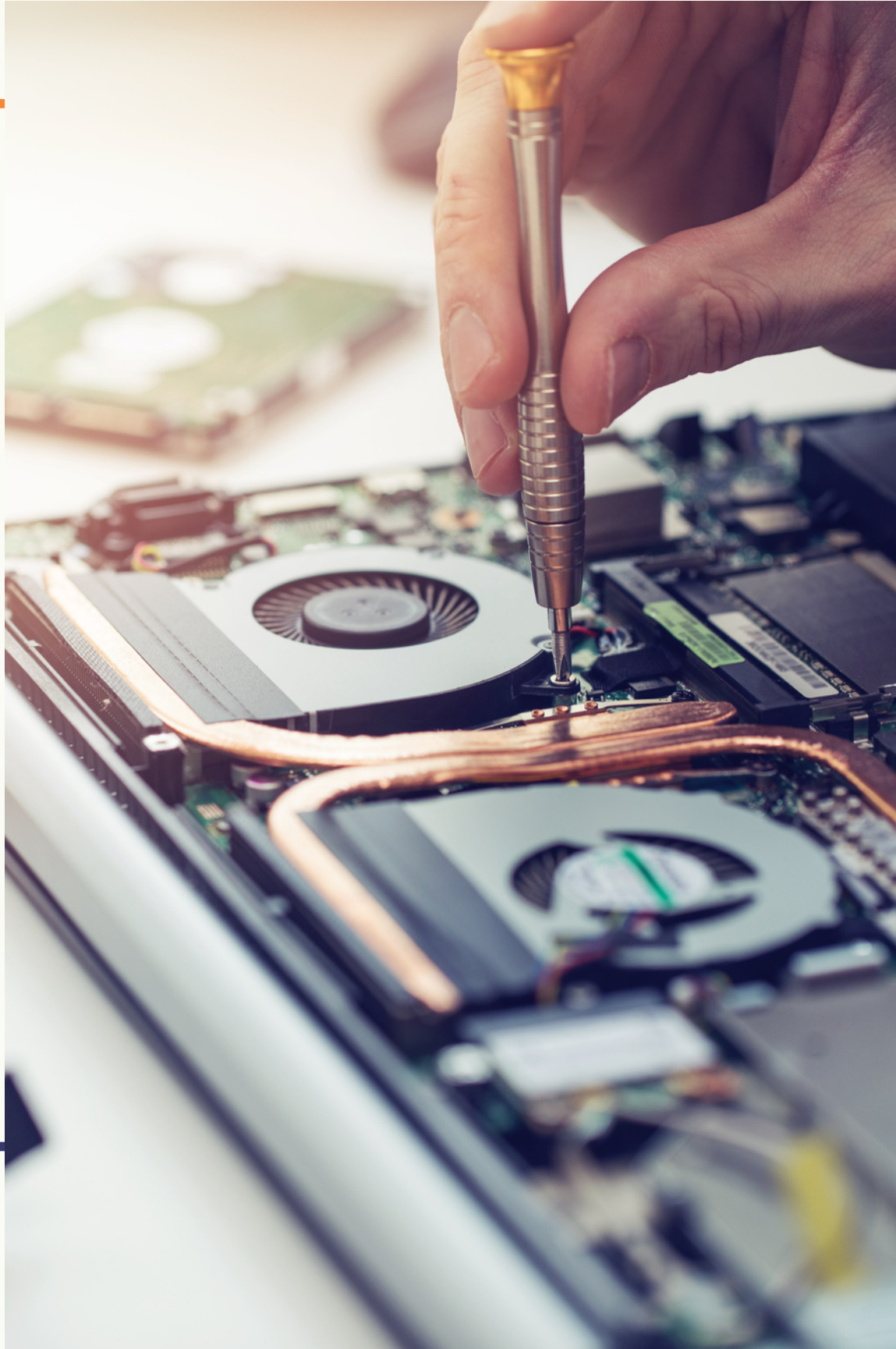
**Data
Recovery**



**Cyber Security &
Malware Removal**



**Annual
Maintenance
Contracts**



LAPTOP REPAIR / DESKTOP REPAIR

Facing trouble with your devices? Let our proficient team of engineers solve them for you! Our services cover a comprehensive range of hardware (laptop, desktop, routers, printers, scanners and more) and can help you overcome any technical difficulties in your IT devices.

NETWORK CONFIGURATION

Through the use and application of modern technology and knowledge, our team can quickly set up and get running multiple heterogeneous networks. Our partnerships with the telecom giant TATA Teleservices allows us to help customers interconnect their offices beyond city boundaries.





TELECOM PRODUCTS & SERVICES

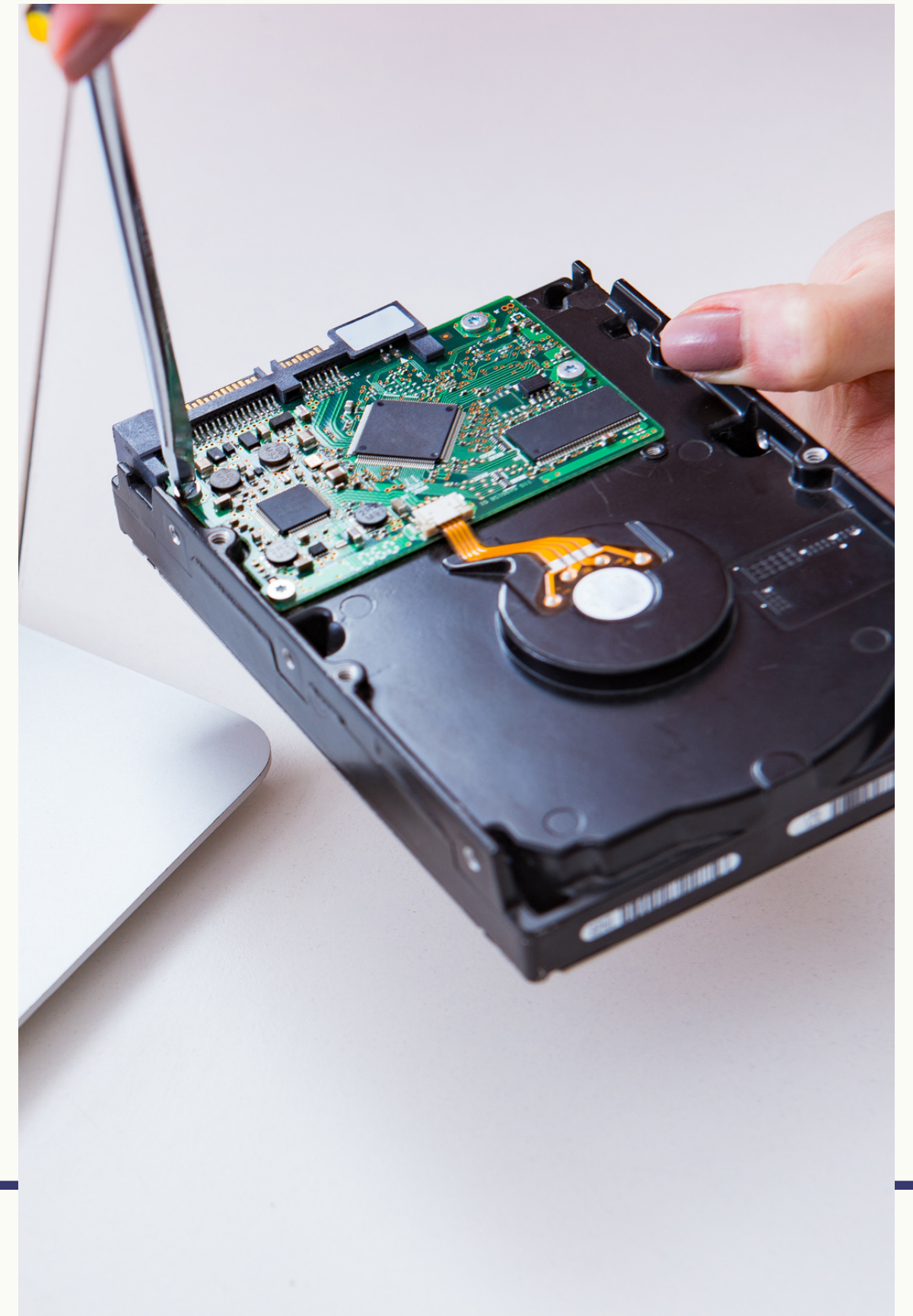
Thanks to our partnership with TATA Teleservices, we can provide enterprise-grade Internet services to corporates and MSMEs bandwidth which perfectly suits their needs.

We can additionally provide SIP trunks, toll-free set-ups and other services to corporates as per their need.

DATA RECOVERY

Data stored is as reliable as the physical properties of the hard-disk that stores it. Any damage to its physical properties, or a malware attack can potentially compromise it.

Our skill of digging deep into the hardware and the encryption and storage algorithms allows us to retrieve data from a damage or infected hard-disk, which has been a life-saver in multiple cases!





CYBER SECURITY & MALWARE REMOVAL

Cybercrimes are increasing day by day as more and more types of vulnerabilities are being exploited by the community of so-called hackers. Internet users, – whether they are an individual, a small enterprise, or a large enterprise – need to be extremely vigilant with their data to make sure they stay protected from any cyber-attacks.

CYBER SECURITY & MALWARE REMOVAL

We have been instrumental in creating this awareness and educating our customers about these equipments & services and in helping them shortlist and purchase a cyber-security product that best fits their current IT infrastructure.





ANNUAL MAINTENANCE CONTRACTS

During our AMCs we offer 4 Preventive Maintenance Services (PMS) in a year to provide these essential services. For example, during each visit we clean computer internals – fans that accumulate dust and other vents which block heat dissipation are cleared & cooling systems are optimized. A heated CPU slows down the performance & PMS can boost it greatly. Additionally, softwares build tonnes of junk in the form of temporary files, cache, duplicate files etc. With PMS, we clear these files & free up your system from cyber clutter.

BRANDS WE SELL & SERVICE

lenovo



ASUS



SAMSUNG

Quick Heal

Security Simplified



Microsoft

And much more

SOFTWARE PORTFOLIO

WHAT DOES IT INCLUDE

Inclusive of customized softwares, mobile apps, and web applications, software development is one of our core strengths.

Developed in new-age languages, our softwares solve all requirements of clients!



A GLIMPSE INTO OUR SOFTWARE PORTFOLIO



**Diamond mine
company**



**Multinational
importer**



**Exhibition
Organiser**



**Luxury
Township**



**Children's
Activity Centre**



**Business
Activity**



DIAMOND MINE COMPANY

A versatile, integrated software tracking the diamonds all the way from the mine to the polishers, manufacturers, retailers, and customers. This software for an Antwerp-based diamond mine was accompanied by over 40 reports providing detailed information of all relevant aspects.

MULTINATIONAL IMPORTER

A comprehensive CRM and business management application for an assorted products importer.

It is accompanied with sales and stock management, manufacturing accounting, product tracking, forex accounting and many more essential features.





JEWELLERY EXHIBITION ORGANISER

Registration, authorization of visitors, badge-generation, event management, exhibition information, security interface and holistic analysis. Additionally, a mobile app for exhibitors and on-spot registration for visitors.

LUXURY TOWNSHIP

Resident and commercial plot management, city maintenance, with proforma & tax invoice generation, alongside a thorough reporting system.





CHILDREN'S ACTIVITY CENTER

Beginning with student registration and covering fees, maintaining attendance, recording activities done, library management etc.

Parents are granted access to reports through a mobile app to track their child's progress.

BUSINESS CORPORATIONS

Tracking employees alongside client complaints, assigning service calls and complete CRM.

Also includes recording services and generation of service reports & sale invoices. This is integrated with employee payroll requirements, and maintaining business intelligence.



OUR AREAS of EXPERTISE



And much more

THANK YOU

CONTACT INFORMATION



Email: sales@nichecomp.in

Contact: +91 87796 34337

Website: www.nichecomp.in

Address: F602, Remi Bizcourt,
Off Veera Desai Rd, Andheri
(W), Mumbai - 400 053



[@nichecomputers](https://www.instagram.com/nichecomputers)



[@nichecomp](https://www.facebook.com/nichecomp)



[@nichecomputer](https://www.linkedin.com/company/nichecomputer)